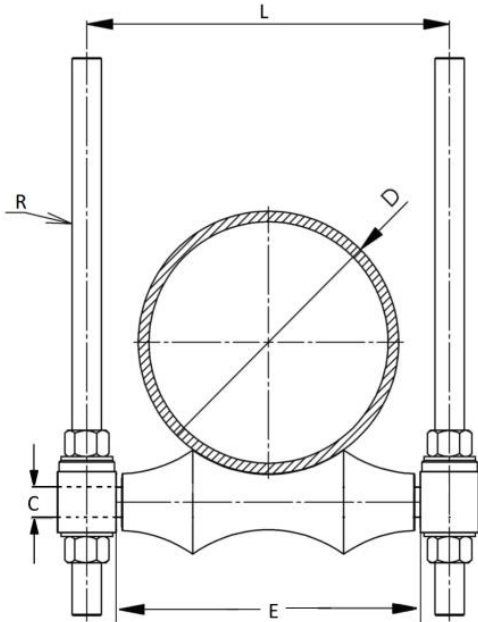




PIPE ROLLER



FEATURES AND BENEFITS.

Description:-	<ul style="list-style-type: none"> * For support of pipes to provide axial movement. * Multiple pipe installations possible by using o rollers. * Versatile design permits axial movement of pipe due to expansion and contraction. * Standard installation would support a single pipe and design permits installation of to pipes in double banking arrangement. In such cases ensure that the total weight of the installation is less than the maximum load of the roller as mentioned in the able. <p>Insulation protection products such as Rubber Support Inserts, Insulation protection Shields and Pipe Cering protection Saddles can be used with Pipe Rollers.</p>
Material:-	<p>Bracket : Steel Roller : Solid steel shaft</p>
Special:-	<ul style="list-style-type: none"> * Galvanized as per ASTM B 633. * Galvanized as per ASTM A 123 / A 123M. * Designed to meet MSS Standard SP-58-2002, type 44 and SP-69.

Product Code	Nominal Pipe Size		Pipe OD (D) mm	Dimensions (mm)			Max Load (N)
	In.	mm		E	CXL	R	
VTEPPR060	2"	DN50	60.3	70	M12 x 115	M12	3500
VTEPPR073	2½"	DN65	73	83	M12 x 125	M12	3500
VTEPPR090	3"	DN80	88.9	99	M12 x 145	M12	3500
VTEPPR101	2½"	DN90	101.6	112	M12 x 160	M12	3500
VTEPPR114	4"	DN100	114.3	125	M12 x 175	M12	5000
VTEPPR141	5"	DN125	141.3	152	M12 x 200	M12	5000
VTEPPR168	6"	DN150	168.3	179	M20 x 245	M16	5000
VTEPPR219	8"	DN200	219.1	231	M24 x 305	M16	12500
VTEPPR273	10"	DN250	273	285	M24 x 365	M20	12500
VTEPAR323	12"	DN300	323.8	336	M24 x 425	M20	15000
VTEPPR356	14"	DN350	355.6	368	M24 x 460	M24	15000
VTEPPR406	16"	DN400	406.4	419	M24 x 515	M24	20000
VTEPPR457	18"	DN450	457.2	470	M33 x 580	M32	35000
VTEPPR508	20"	DN500	508.2	520	M33 x 630	M32	35000
VTEPPR610	24"	DN600	609.6	626	M52 x 780	M36	50000
VTEPPR661	26"	DN650	661	679	M52 x 845	M36	50000
VTEPPR712	28"	DN700	712	732	M52 x 895	M36	50000
VTEPPR755	30"	DN750	755	778	M52 x 940	M36	50000

NOTE:-

1. CUSTOMIZED DIMENSIONS AVAILABLE ON REQUEST.
2. a. EP - MICRONS : 8μ - 15μ
b. HDG - MICRONS : 70μ - 95μ

