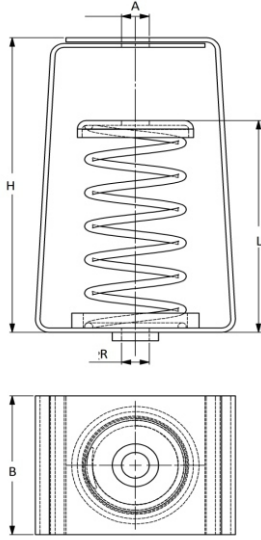




SPRING HANGER



FEATURES AND BENEFITS.

- Description:-**
- * Spring hangers are used to isolate suspended sources of both noise and vibration.
 - * Suspended mechanical equipment such as air handling units, FCU's, cabinet fans, piping and duct work in close proximity to rotating mechanical equipment are typical applications of spring hangers.
 - * Colour coded springs as per load ratings.
 - * Outer diameter equal to at least 85% of working height.
 - * Springs designed for 50% overload capacity.
 - * Brackets and springs powder coated.
- Special:-**
- * Designed to meet Bs1726, class B.

Product Code	Colour Code	A mm	B mm	H mm	L mm	R mm	Deflection mm	Max Load (N)
VTSH 20/25	White	10.5	38	70	57	M10	20	250
VTSH 20/30	Yellow	10.5	38	70	57	M10	20	300
VTSH 20/50	Purple	10.5	38	70	57	M10	20	500
VTSH 25/10	Purple	10.5	52	104	80	M10	25	100
VTSH 25/15	Yellow	10.5	52	104	80	M10	25	150
VTSH 25/20	Grey	10.5	52	104	80	M10	25	200
VTSH 25/30	Green	10.5	52	104	80	M10	25	300
VTSH 25/40	Light Blue	10.5	52	104	80	M10	25	400
VTSH 25/60	Green	12.5	65	138	96	M12	25	600
VTSH 25/100	Green	12.5	65	138	96	M12	25	1000
VTSH 25/160	Orange	12.5	65	138	96	M12	25	1600
VTSH 25/200	Red	12.5	65	138	96	M12	25	2000
VTSH 25/250	Purple	12.5	65	138	96	M12	25	2500
VTSH 25/300	Grey	16.5	85	157	115	M16	25	3000
VTSH 25/400	Orange	16.5	85	157	115	M16	25	4000
VTSH 25/500	Brown	16.5	85	157	115	M16	25	5000
VTSH 25/600	Black	16.5	85	157	115	M16	25	6000
VTSH 25/800	Red	16.5	85	157	115	M16	25	8000
VTSH 25/1050	White	16.5	85	157	115	M16	25	10500
VTSH 25/1250	Green	16.5	85	157	115	M16	25	12500

- NOTE:-**
1. DUE TO POLICY OF CONTINUAL IMPROVEMENT, THE SPECIFICATIONS ARE SUBJECT TO CHANGE WITHOUT PRIOR NOTICE.
 2. MEASUREMENT ARE SUBJECT TO 5% TOLERANCE.
 3. TO ACHIEVE GOOD SOUND SUPPRESSIONS DO NOT LOAD FITTING.

